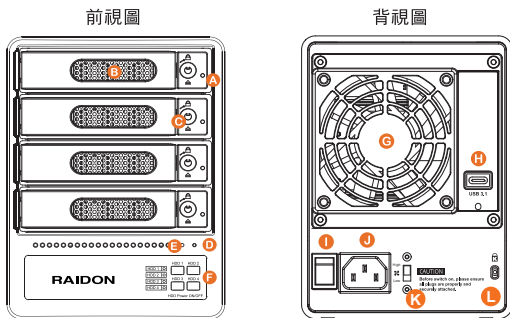


GT5640-B31 / GT5640-BA31 快速安裝導引

產品示意圖與配件表



- | | |
|------------------|--------------------------------|
| A 硬碟讀取燈 | H USB 3.2 Gen2 Type-C 埠 |
| B 硬碟抽取盒把手 | I 電源總開關 |
| C 硬碟卡榫按鈕 | J 電源插座 |
| D 系統指示燈 | K 風扇轉速切換按鈕 |
| E 電源指示燈 | L 防竊鎖孔 |
| F 硬碟電源按鍵 | |
| G 風扇 | |

打開包裝外盒後，包裝內容應包含以下組件：

GT5640 產品本體 X1(內含抽取盒 x4)		
USB 3.2 C to C 連接線 x1 (for GT5640-BA31 / GT5640-B31)		電源線 x1
USB 3.2 C to A 連接線 x1 (for GT5640-BA31)		
把手 x1	快速安裝導引 x1	螺絲及頂針

- 請先確認相關配件與產品本身是否有受損或是缺少配件，若有任何疑問，請與您的經銷商或業務人員聯絡。
- 請前往官網 (www.raidon.tw) 下載使用者說明書。



V1.0 (July 2022)

1

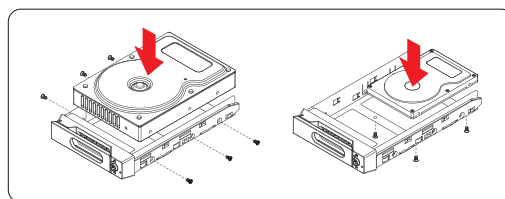
指示燈燈號說明

狀態	硬碟	Type C 連接主機
無硬碟	HDD 1	紅燈恆亮
	HDD 2	紅燈恆亮
	HDD 3	紅燈恆亮
	HDD 4	紅燈恆亮
硬碟開置	HDD 1	藍燈恆亮
	HDD 2	藍燈恆亮
	HDD 3	藍燈恆亮
	HDD 4	藍燈恆亮
硬碟格式化	HDD 1	藍燈閃爍
	HDD 2	藍燈閃爍
	HDD 3	藍燈閃爍
	HDD 4	藍燈閃爍

硬體安裝

請參照下列步驟，完成GT5640的硬體安裝：

- 將主機置放於平穩空間上，並確認散熱風扇沒有被擋住，且四周有適當的散熱空間。(請避免接近水源或是其他容易造成產品損傷的環境)
- 請使用配件中所附的頂針插入硬碟抽取盒頂針孔，開啟硬碟抽取盒把手便將抽取盒取出。
- 安裝 3.5 吋硬碟，請使用 6 顆零件包內附的大顆螺絲加以固定；安裝 2.5 吋硬碟，請使用 4 顆零件包內附的小顆螺絲加以固定。
- 硬碟安裝完成後，請將抽取盒平移放入主機內，並關上把手。



- 將電源線與 GT5640 連接，再將電源線與電源插座連接。
- 視需求選擇配件中對應的 (USB) 連接線，再分別接到電腦與 GT5640 相關連接埠。
- 透過前方的觸控按鍵來操作 JBOD 外接盒。(請參考「前面板操作」)

2

前面板操作



長按3秒，即可開關單一硬碟

使用者可經由面板進行 硬碟開/關操作。

- GT5640開啟後，電腦端應可識別到四顆獨立硬碟，請依照作業系統指示完成格式化後即可正常使用。
- 使用過程中，若暫不需要使用到某顆硬碟，可透過相對應的「硬碟電源按鍵開關」來關閉該硬碟電源，以達省電效果。後續若需要用到該硬碟時，一樣只需透過相對應的「硬碟電源按鍵開關」即可開啟該硬碟電源。
- 即使已單獨關閉某顆硬碟電源，若透過前端的「電源按鍵開關」或後端的「電源總開關」來關閉 GT5640，則下次啟動時，四顆硬碟的電源都會恢復成開啟狀態。

3

產品使用注意事項

- 當您需要關閉或移除 GT5640或某顆硬碟時，務必透過您所操作的作業系統中執行硬碟安全移除後，方進行電源關閉的動作。
- 強烈建議除了使用GT5640的資料儲存功能外，請針對重要資料備份到另一個儲存裝置上或遠端備份，雙重備援您重要的資料。若您儲存在GT5640 的資料損毀或遺失，RAIDON 將不負任何的責任。備援您重要的資料。若您儲存在GT5640的資料損毀或遺失，RAIDON 將不負任何的責任。

感謝您使用 銳銜科技股份有限公司 的產品。

本手冊裡的資訊在出版前雖然已經被詳細確認，但實際產品規格將已出貨時為準；任何的產品規格或相關資訊更新，請您直接上 www.RAIDON.com.tw 網站查詢，或直接與您的業務聯絡窗口聯繫，本公司將不另行通知。

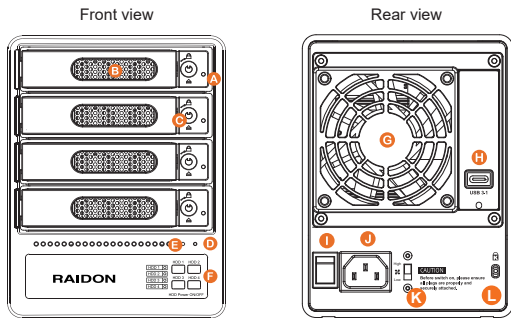
如果您對 銳銜科技 的產品有任何疑問，或是想獲得最新產品訊息、使用手冊或軟體，請您聯絡 supporting@raidon.com.tw，我們將儘速回覆您。

RAIDON 為 銳銜科技股份有限公司 旗下品牌之一
本說明相關產品內容歸 銳銜科技股份有限公司 版權所有

4

GT5640-B31 /GT5640-BA31 Quick Installation Guide

Package Contents and Product Views



- A HDD access light
- B HDD enclosure pin release
- C HDD enclosure handle
- D Power status light
- E System status light
- F HDD Power button
- G Fan
- H USB 3.2 Gen 2 Type-C port
- I Main power switch
- J Power socket
- K Fan speed switch
- L Anti-theft lock

Open the package and you should find the following :

GT5640 product x 1 (with removable drive tray enclosed x4)		
USB 3.2 C to C Cable x 1 (for GT5640-BA31 / GT5640-B31)	Power Cable x1	
USB 3.2 C to A Cable x 1 (for GT5640-BA31)		
Handle x1	Quick Installation Guide x1	Screws & Ejector pins

- Please check the included parts and the product itself for any damage or missing parts. If you have any questions, please contact the retailer or sales representative.
- Please download the user manual from the official website (www.raidon.com.tw)



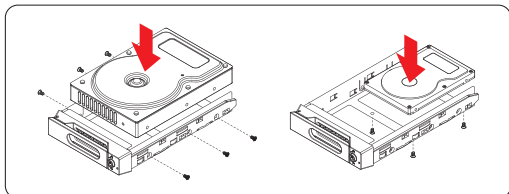
V1.0 (July 2022)

Visual Status Indicator Definitions

Status	HDD	Type C connect HOST
No HDD	HDD 1	Red light always on
	HDD 2	Red light always on
	HDD 3	Red light always on
	HDD 4	Red light always on
Disk Idle	HDD 1	Blue light always on
	HDD 2	Blue light always on
	HDD 3	Blue light always on
	HDD 4	Blue light always on
Disk Format	HDD 1	Blue light flashing
	HDD 2	Blue light flashing
	HDD 3	Blue light flashing
	HDD 4	Blue light flashing

Hardware Installation

- Place the system on a stable surface. Ensure that it is well ventilated without blockage to the vent and kept away from areas near water and damage prone areas.
- Use the ejector pin included in the accessory kit and inserted into the pin release opening to eject the removable drive tray latch and extract the removable drive tray.
- For 3.5" HDD/SSD, please secure it by use six the larger screws included in the accessory kit. For 2.5" HDD/SSD, please secure it by use four the smaller screws included in the accessory kit.
- When the hard drive installation has been completed, insert the hard drive tray into the system horizontally and secure the latch into place.
- Connect the power cable to the GT5640, and then plug the power to the wall socket. Boot-up the unit.
- Select the corresponding (USB) cable from an accessory and connect it to the computer and the GT5640 relevant port respectively.
- Using the buttons on the front to turn on /off HDD (please refer to section description of front panel operation).



Description of Front Panel Operation



Press for 3 seconds to turn on or off a single hard drive.

- After the GT5640 is turned on, the computer should be able to recognize the four independent hard disks. Please follow the operating system's instructions to complete the format process and then the disks should be ready to used.
- If you do not need to use one or more disks temporarily, you can turn the disk off through the corresponding "hard disk power switch" to save power. And then use the same switch to turn on the disk if you need to use it.
- Even if one or more disks has been individually powered off, if the GT5640 is turned off through the "power switch" or the "main power switch", next time when GT5640 is turned on again, the power of the four disks will return to the on state.

Important Notice

- When you need to turn off or remove the GT5640 or a certain hard drive, be sure to perform the safe removal of the hard drive through the operating system you are operating before turning off the power.
- It is highly recommended for users to back up important data contained within the GT5640 unit on a regular basis or whenever the user feels necessary to a remote or a separate storage device. Stardom will not be responsible for any lost of data caused during the use of the unit or the recovery of the data lost.

Thank you for choosing RAIDON's product. The information provided in this manual was checked before publication, but the actual product specifications may have changed before shipping; Latest product specifications and updates can be found at www.RAIDON.com.tw or through your sales representative. No separate notifications will be provided by our company. If you have any questions about RAIDON products or would like to receive the latest product information, instruction manuals, or firmware, please contact Supporting@raidon.com.tw for assistance.

RAIDON is one brand under RAIDON TECHNOLOGY, INC. All product-related content in this manual are copyrighted by RAIDON TECHNOLOGY, INC.